

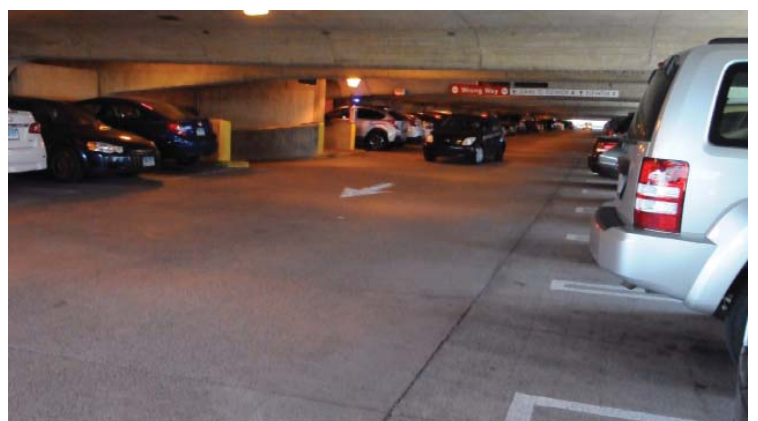
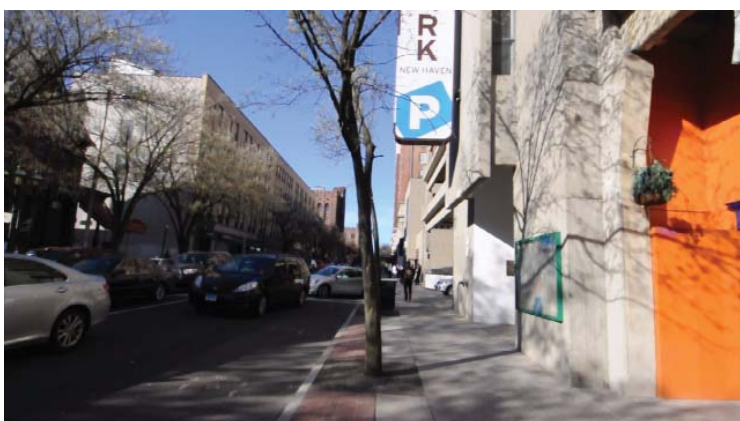
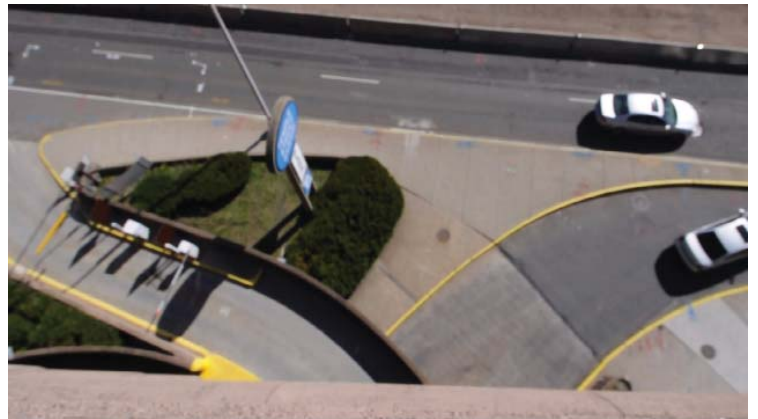
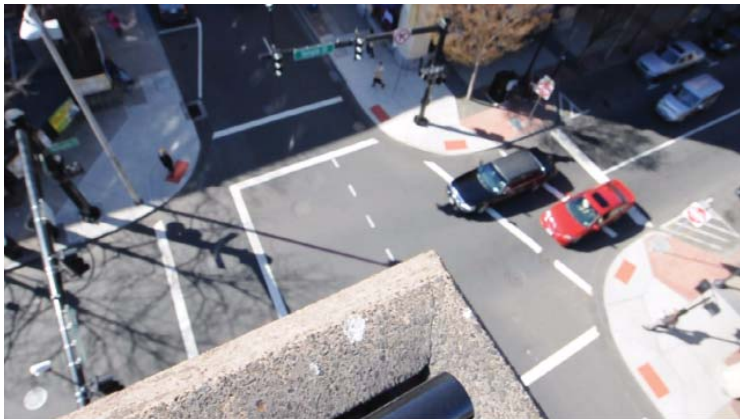
## ***Parking as Power: Cinegraphic Analysis of Crown St.***

Crown Street is in constant dialogue with its parking infrastructures. As the mediator between the city and the highway, Crown Street must interface with both its urban as well as service identity. The parking structures offer a frame of reference but also offer a unique street presence in a nuanced and complex fabric. Long exposure studies were completed to analyze the functionality as well as the urban frame that parking provides.

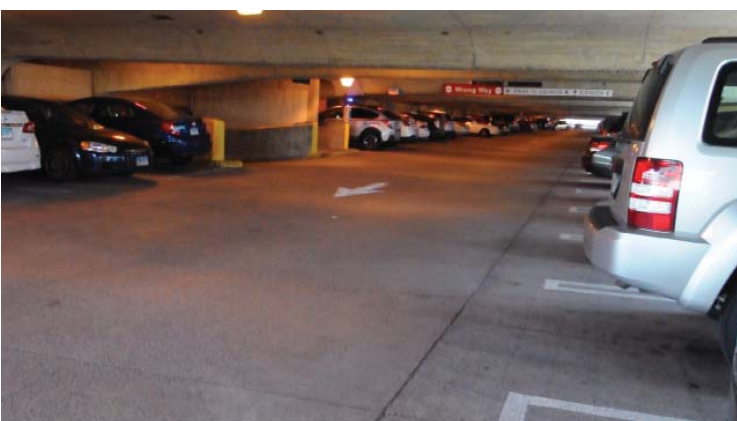
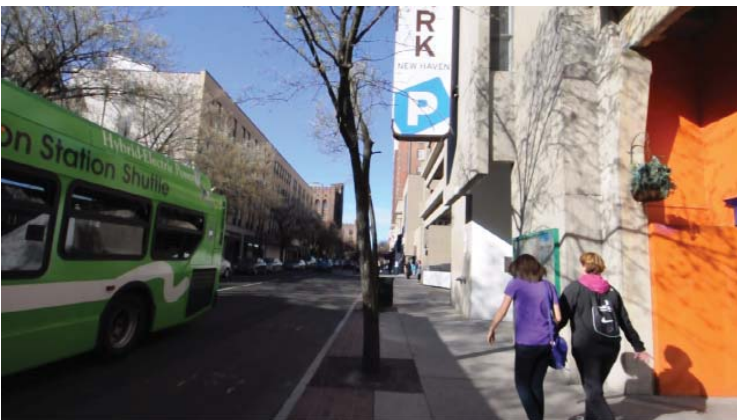
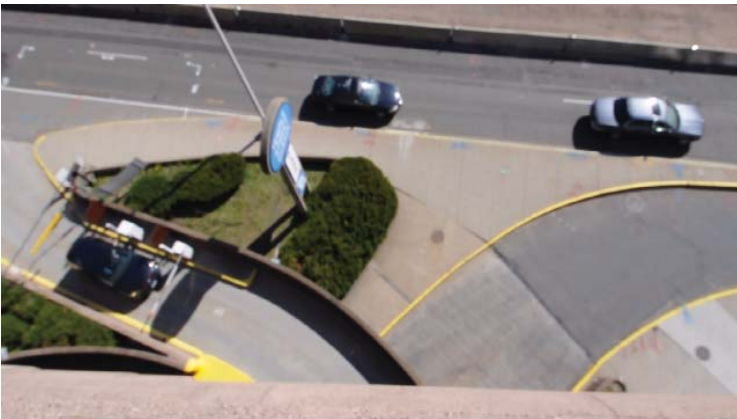
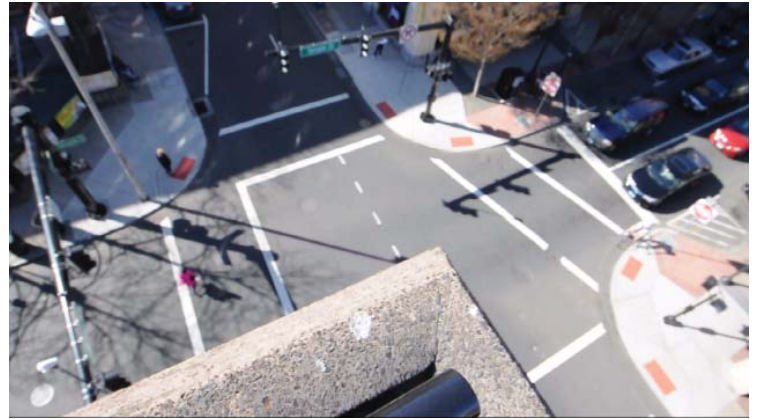
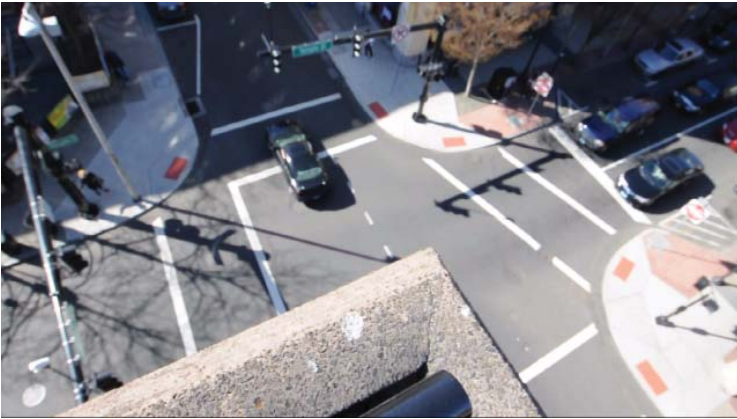
The resultant video reveals the challenge that Crown faces: the thoroughfare vs. the street. How can its urban identity escape its infrastructural function?

The screenshots of the video are a result of the recursive process: taken every 10 seconds throughout the video they represent an unbiased record of the biased analysis. By revealing the often subverted necessity of parking, the result reveals the subtle importance and prominence of these systems on Crown St.

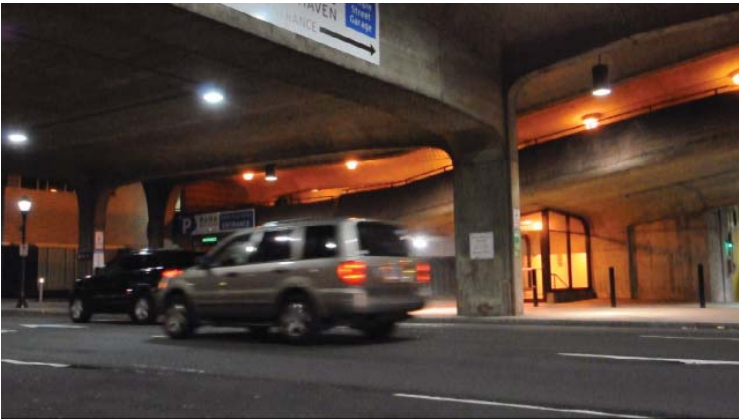
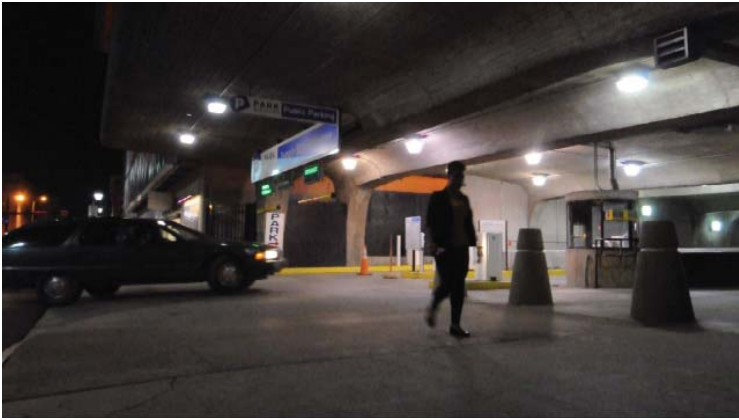


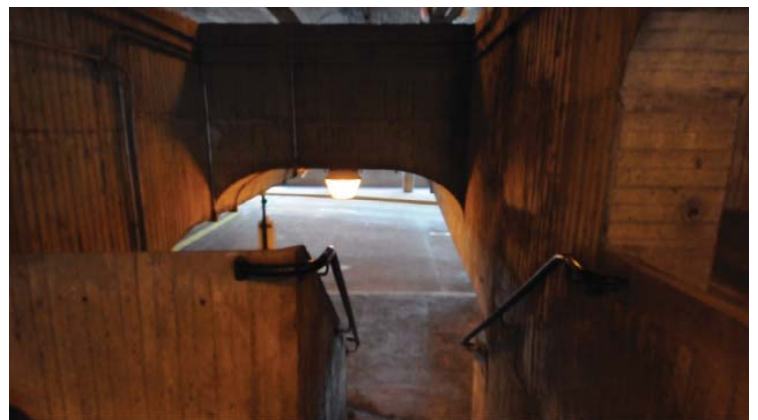






















## ***Diagrammatic Analysis of Crown Parking***







12 Spaces

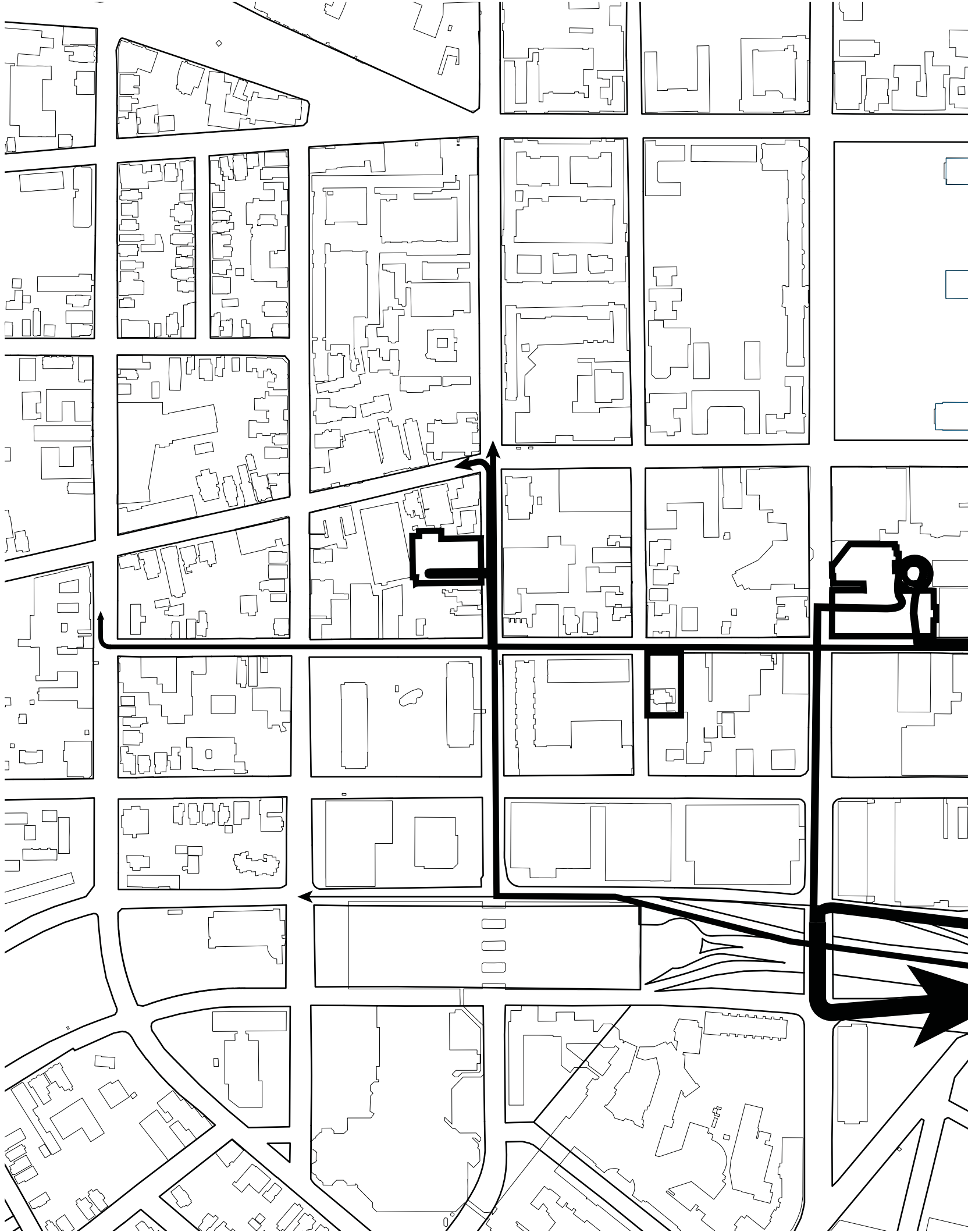
4 Spaces

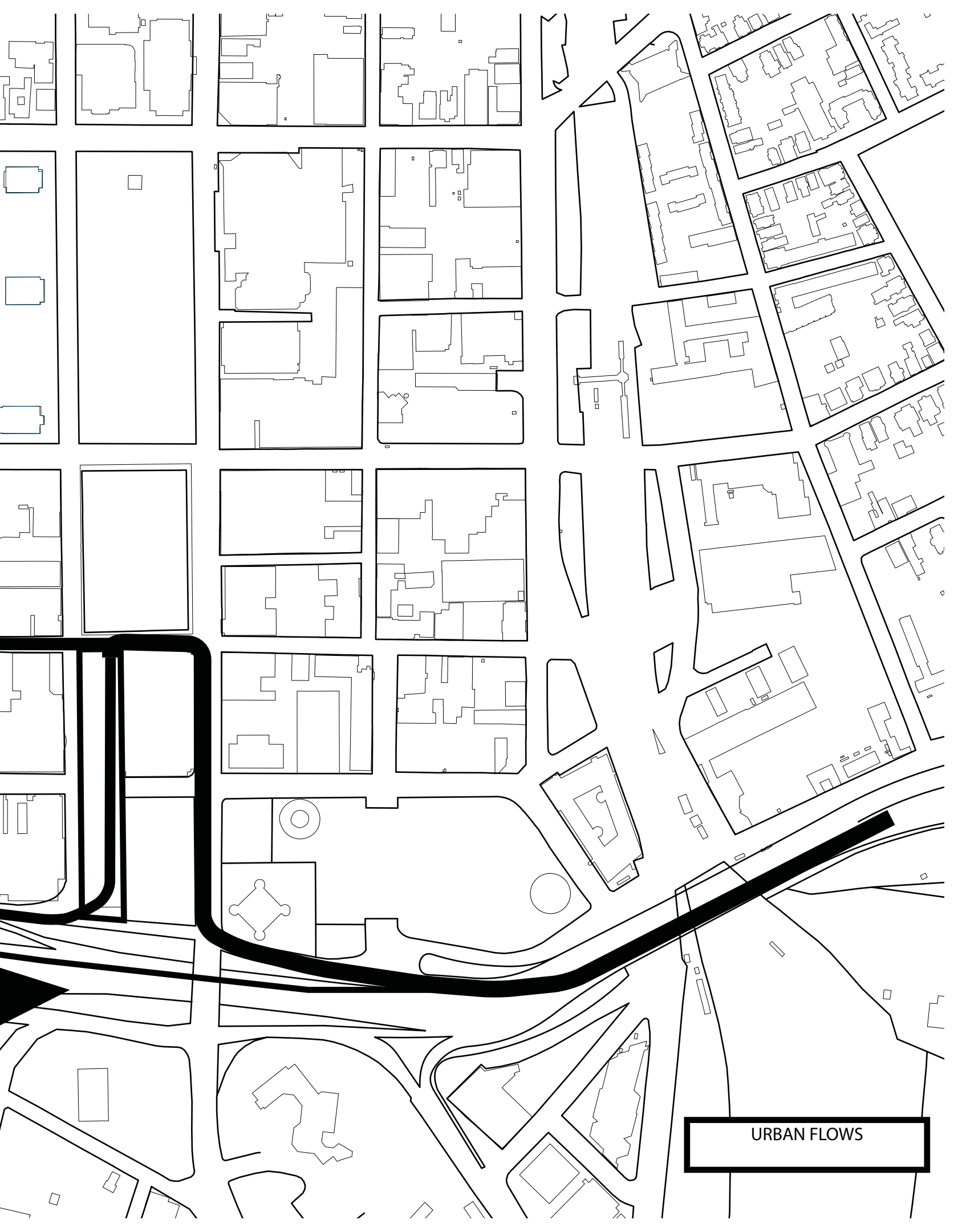
15 Spaces

14 Spaces

CURB CUTS AND STREET  
PARKING SPACES







URBAN FLOWS



THE CITY OF  
NEW HAVEN  
OWNS 3,176  
PARKING  
SPACES  
ADJACENT TO  
CROWN STREET

*thinkbeforeyoudriveandparkonCROWN*

THERE ARE 130  
SPOTS ON  
CROWN STREET

*thinkbeforeyoudriveandparkonCROWN*



THERE ARE  
1,219 NON CITY  
OWNED  
GARAGE  
SPACES ON  
CROWN STREET

*thinkbeforeyoudriveandparkonCROWN*

THERE ARE 491  
SURFACE  
PARKING  
SPACES  
ADJACENT TO  
CROWN STREET

*thinkbeforeyoudriveandparkonCROWN*



CROWN STREET  
HAS 5,016  
SPOTS FOR  
CARS

WHY?

*thinkbeforeyoudriveandparkonCROWN*